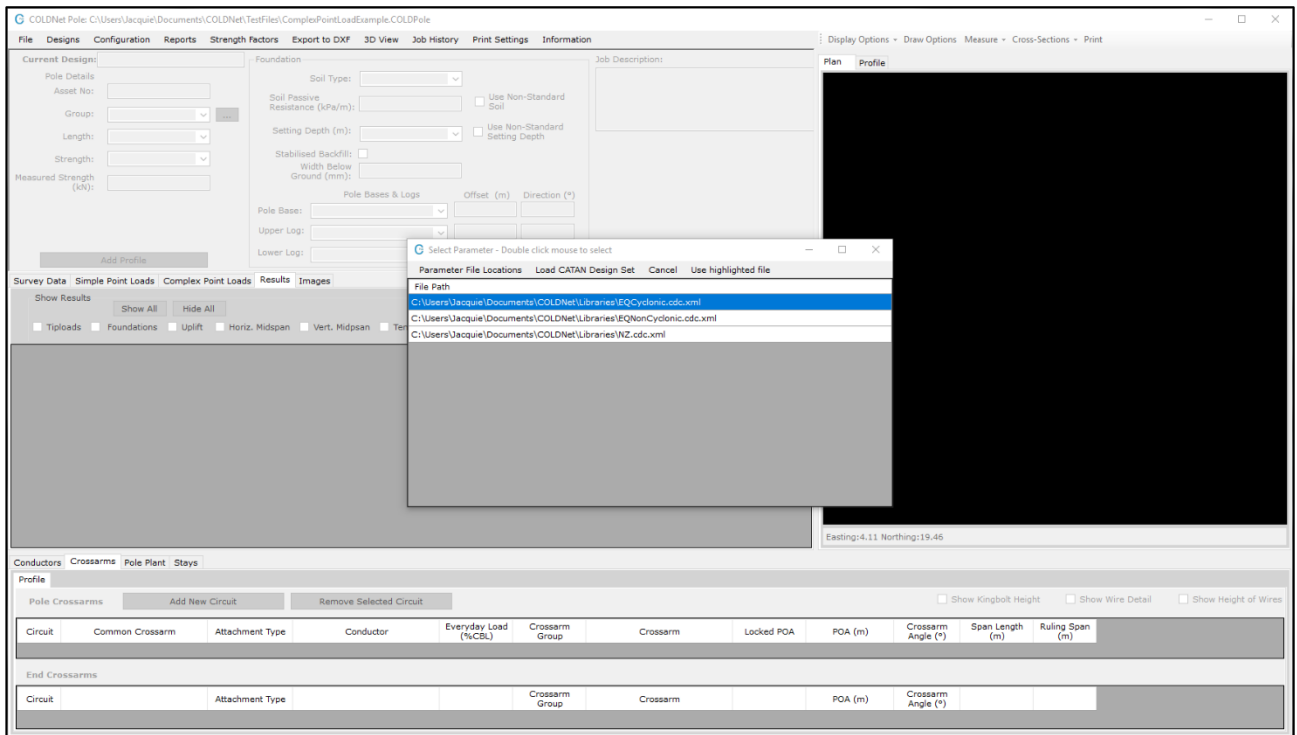


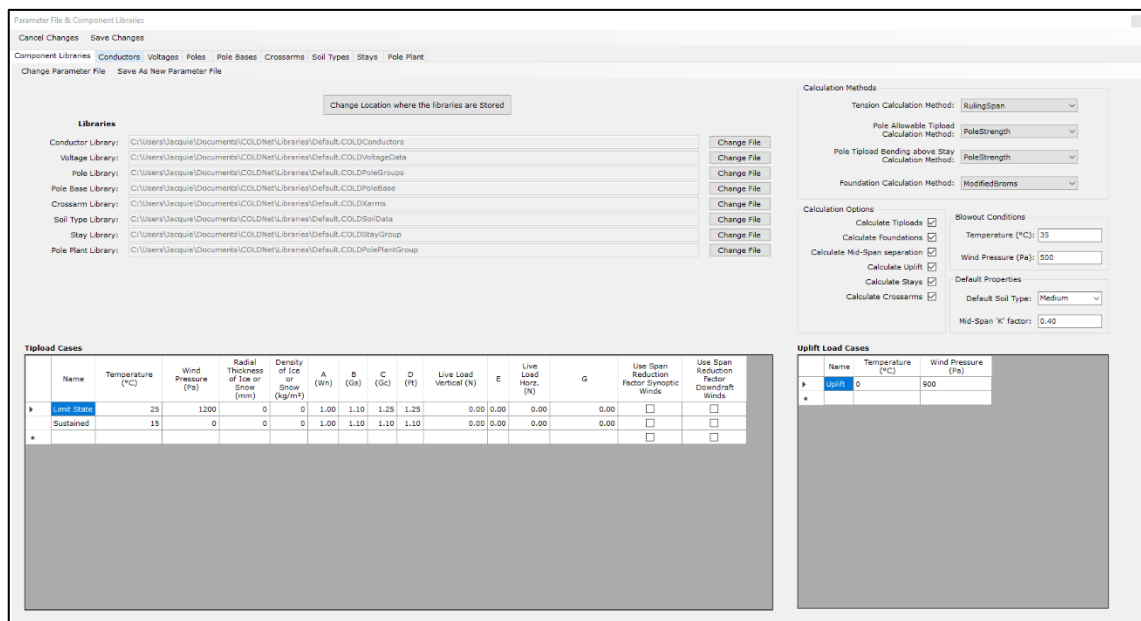
COLDNet Pole – Simple Point Load Example



1. Install COLDNet Pole and open application
2. Select **File>New**
3. Give the file a name, e.g. **SimplePointLoadExample**
4. The following screen below will appear. Select **Parameter File Locations>Add Directory** to navigate to the location where the Design Parameters/Libraries have been stored locally on the machine. Once selected **Close** Manage Directories window and double click on the desired parameter file from the list. For this example select the Design Parameter file called **EQCyclonic**.



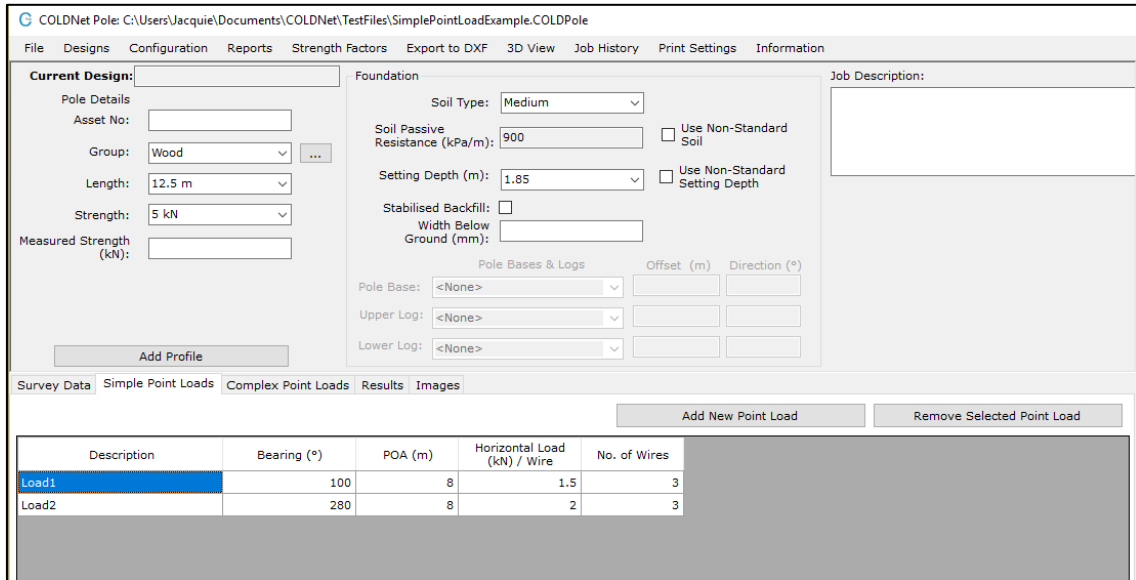
5. The design criteria and libraries can be viewed by selecting **Configuration** from the top menu on the main screen.



COLDNet Pole – Simple Point Load Example



6. If applicable, record the pole **Asset No.**
7. Select the **Group, Length and Strength** of the pole from the dropdown menus on the main form
8. Select **Soil Type** and **Setting Depth** from the dropdown menus
9. Select the **Simple Point Loads** tab
10. To add a new Simple Point Load select **Add New Point Load**
11. Enter in the details of the point load. An example has been given below



12. Select the **Results** and **Show All** tab to view the basic results

